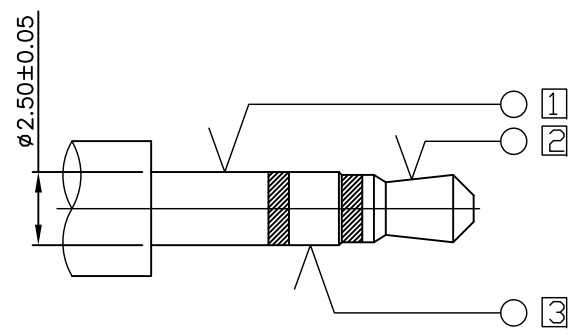
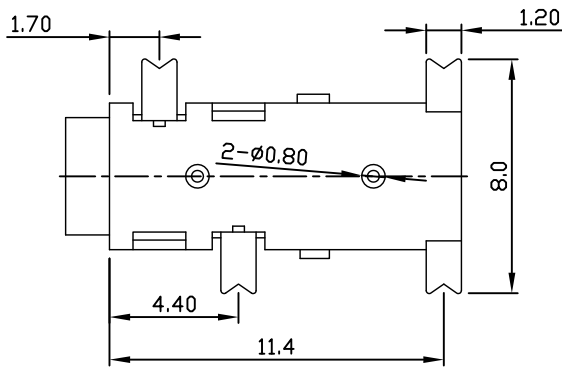
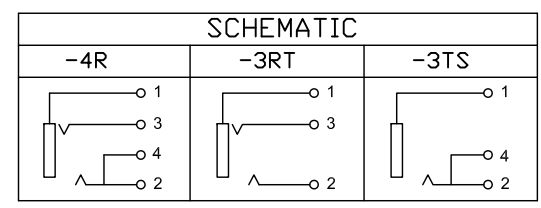


RECOMMENDED PCB LAYOUT  
TOLERANCE:  $\pm 0.05$   
(TOP VIEW)



$\phi 2.5-(3)$  MATE PLUG-REF



**LIH SHENG PRECISION INDUSTRIAL CO., LTD.**

5	HOUSING	1	PA10T	UL94V-0 (BLACK)
4	TERMINAL 4	1	BRASS	GOLD PLATED
3	TERMINAL 3	1	PHOSPHOR BRONZE	GOLD PLATED
2	TERMINAL 2	1	PHOSPHOR BRONZE	GOLD PLATED
1	TERMINAL 1	1	PHOSPHOR BRONZE	GOLD PLATED
NO	PART NAME	Q'TY	MATERIAL	REMARK

<b>TOLERANCE</b> XX $\pm 0.30$ X.XX $\pm 0.25$ X.XXX $\pm 0.20$	<b>Material</b>		<b>PART NAME</b>	<b>EARPHONE JACK(SMT)</b>	
	<b>Thickness</b>		<b>PART NO.</b>	<b>LJE0259-4R-G-10H</b>	
	<b>Disposal</b>		<b>DATE</b>	<b>03/JAN/23'</b>	<b>REV:A</b>
	<b>UNIT</b>	<b>SCALE</b>	<b>DRAW</b>	<b>CHECK</b>	<b>APPROVED</b>
	mm	4:1	Chris	Wen1	Yen